

MANITRANSIT ■ TMT 2515 CR

Semi-industrial telescopic
truck-mounted forklift

- Maximum capacity 2500 kg
- Unloading from one side of the deck



TMT 2515 CR



CAPACITY

Maximum Capacity2500 kg



LIFTING

Maximum lifting height3350 mm

Maximum front reach1430 mm

Side-shift.....150 mm



ENGINE / TRANSMISSION

TypePERKINS (50 HP)

Hydrostatic transmission

Driving wheels3



TYRES

Front tyres18X7,8 16PR

Rear tyre.....10X16,5 10PR



DIMENSIONS

Width2332 mm

Height2212 mm

Overhang (in transport position)1400 mm

Weight (without equipment)21570 kg

IN STANDARD

ROPS/FOPS Cab + load indicator

FNR Joystick

Waterproof dashboard and electric connections

Differential lock

OPTIONS

Full mounting kit (+ load repartition calculation)

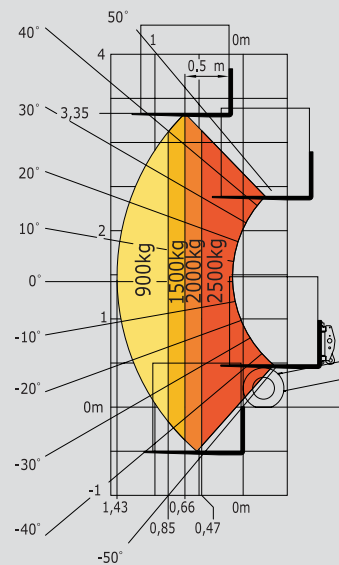
rearview mirrors

Rotating beacon

Road lights

Working lights and reversing light

Load backrest



LONG BOOM



Enables you to offload your lorry from one side : less space required to operate & more time saving.

NEW FNR JOYSTICK



This new « boom control » joystick now integrates the « reversing shift » function : the driver can keep one hand on the steering wheel and one hand on this joystick to operate any movement. Time savings and much better driving position.

POWER



With a 50 HP Perkins engine connected to its 3 driving wheels, the TMT 2515 CR has more power to be at ease on any kind of ground.



This publication in no way constitutes an offer and the company reserves the right to alter specification without prior notice.
The MANITOU models presented in this brochure can be supplied complete with optional equipment attachments.
IMPORTANT : All regulations relating to vehicles apply to vehicles equipped with truck-mounted forklifts.

MANITOU BF SA

B.P. 249 - 44158 Ancenis Cedex - France

Tél. : 33 2 40 09 10 11 / Export Department Fax : 33 2 40 09 10 97

www.manitou.com

700310EN - Doc BE 311/Ind. A

